



www.polinetlux.com
www.polinetltd.com.tr

Email: export@polinetlux.com
info@polinetltd.com.tr



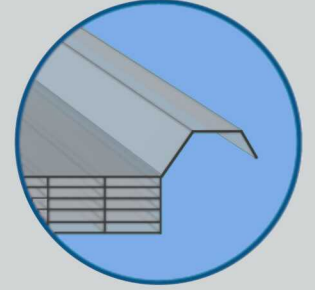
Istanbul Office: +90 885 8500776

Kocaeli Fabric: +90 262 7281513

Professional Products and Systems for Translucent Roof and Facade Cladding



6 Duvarlı Wall



EASYLUX

Multiwall Polycarbonate Panel for Roof Sandwich Panel

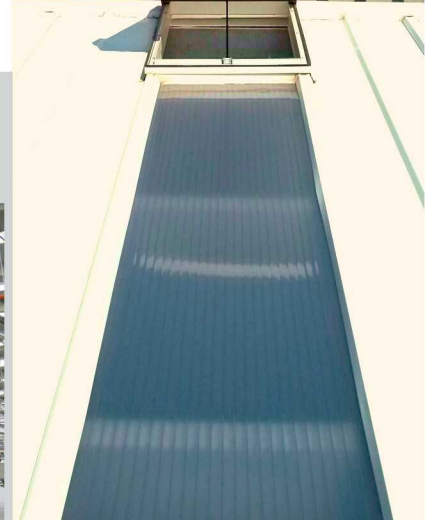
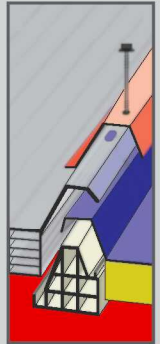
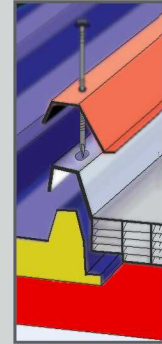
Easylux polycarbonate panels for industrial roof daylighting are very high performance products. Easylux Pc Panels can be very easy installed between sandwich roof panels thanks to overlap connection detail. They can proficiently meet to different expansion rates of polycarbonate and metal sandwich panels through the length of roof slope thanks to their wings form. The wings of Easylux Panels are suitable between well known sandwich panels types on the universal market. Easylux pc panel system are ensure to fast, easy and safe installation without the risk of water exposure. The 6-wall structure of Easylux panels provide high thermal insulation, durability and UV protection. Pc Panels that have thicknesses from 20 mm up to 40 mm are producible thanks to superior production technology of Polinet. These alternative thicknesses of pc panels provide easy adaptation to sandwich panels of the different thicknesses by achieving the best quality/price ratio.

Application Areas

- Rooflights in combination with roof sandwich panel
- Roof and facade cladding
- Industrial building
- Refurbishment building

Advantages of Easylux

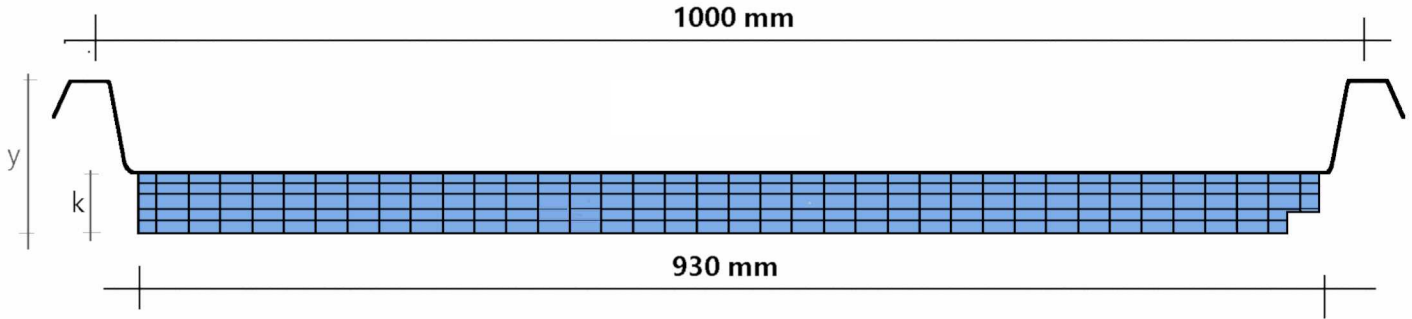
- Easy and fast installation
- Global system: They can be used with many kinds overlap forms of sandwich roof panels on the market.
- High fire resistance
- 10 years warranty
- High impact resistance
- Excellent thermal insulation
- High light transmission



The Products and Systems of Polinet

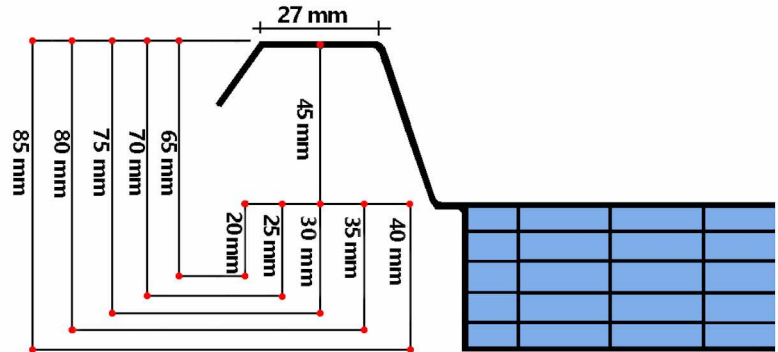
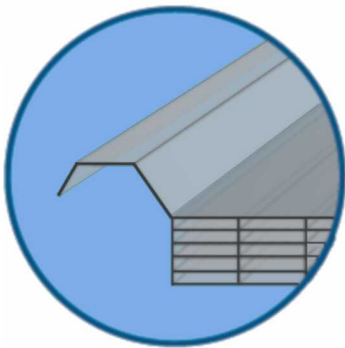
Reflect Daylight and Sky Colours Perfectly to Architectural Size



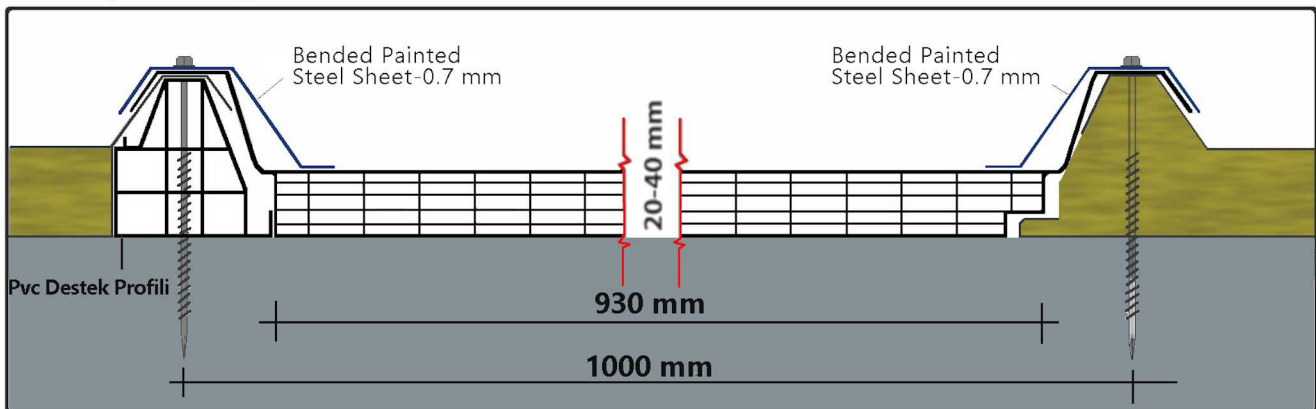


PRODUCT DATA

Thickness	20	25	30	35	40
Structure	6 Walls				
Wide	Distance between wings -1000 mm			Body -930 mm	
	12-10 mt or at the requested lengths				
Thermal Conductivity W/m ² °K	1,45	1,40	1,35	1,28	1,15
	Light Transmission %				
Clear	64	61	59	55	50
Opal	45	42	39	35	32

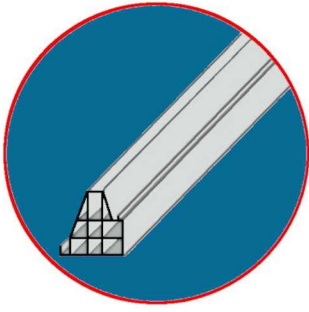


Easylux Pc panels can be easily and safely installed to sandwich panels of various thicknesses thanks to overlapping form of their wings. To ensure the full compatibility of Easylux pc panels with sandwich panels, please take into account the thickness and wings dimensions of Easylux pc panels in the above drawing. Installation should be made with heat-insulated pvc supporter profile designed to fill the blank ear side of sandwich panels and bended painted galvanized accessories. The dimensions and design of the bended painted galvanized accessories could be shown difference according to various body thicknesses and wing structures of sandwich panels types on the market. If the roof slope is too long, pc panels can be produced in the form to be added to each other along the roof slope. In such cases, an information should be given us on this subject during to the order.



SYSTEM ACCESSORIES

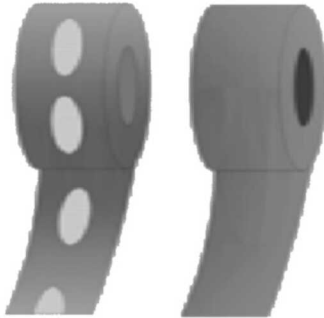
PVC SUPPORTER PROFILE



RAL 9002 colored PVC supporter profile with high-strength body structure is heat-insulated. This accessories has been designed to easily and safely fill the blank wing side of sandwich panel.

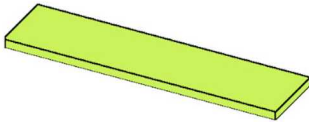
ADHESIVE TAPES

AT-70mm FAT-70 mm



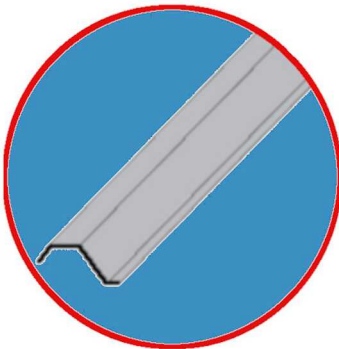
Before the installation, the both open edges of panel must be closed with adhesive tape in order to prevent to enter dust into pc panels. It is recommended to seal pc panel with filter adhesive tapes because of condensation could occur inside of pc panel. Pc panels are drained and ventilated by means of filter adhesive tapes. Taping can be requested and done immediately in factory during production.

POLYTHENE SUPPORTER



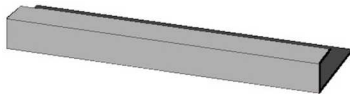
One side adhesive polythene supporters can be used by pasting on the roof purlins, in cases where need the height match of sandwich panel between polycarbonate panel.

PAINTED GALVANIZE CAP



The dimensions and design of these accessories could be difference according to various body thicknesses and wing structures of sandwich panels types on the market. For this reason, Painted galvanize sheet caps should be bended suitable to measures and angles of sandwich panel and polycarbonate panel wings. They are installed on both of side of pc panels lengths by screwing to purlins of the roof. Min 5 cm overlapping must be installed to each others along the length of the roof slope.

PAINTED GALVANIZE ACCESSORIES FOR GUTTER



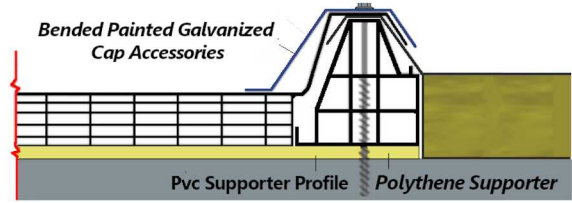
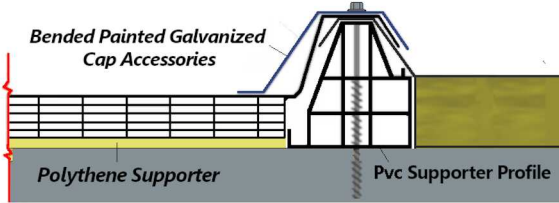
Painted galvanized accessories made by bending according to the thickness of PC panels are fixed to the gutter purlins by screwing. Pc panel edge is put into this accessories.



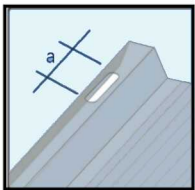
PANEL SCREWS

The screw must be chosen according to construct of purlin.

One side adhesive polythene supporters can be used by pasting on the roof purlins, in cases where need the height match of sandwich panel between polycarbonate panel. (Picture left) Pvc profile matches to sandwich panel of 40 mm thickness. In cases where sandwich panel has more thickness than 40 mm P.E supporter can be also pasted under the pvc profile for height adjustment (Picture right)



Before the installation, the both open edges of panel must be closed with adhesive tape in order to prevent to enter dust into pc panels. It is recommended to seal pc panel with filter adhesive tapes because of condensation could occur inside of pc panel. Pc panels are drained and ventilated by means of filter adhesive tapes. Taping can be requested and done immediately in factory during production.



Pc panels may show thermal expansion due to seasonal temperature differences depending on their lengths. This expansion of the length can be calculated according to the following formula. In this case, min 5 mm bigger hole than screw diameter must be opened on the wings of EasyLux Pc Panel in order to meet the thermal expansion before installation.

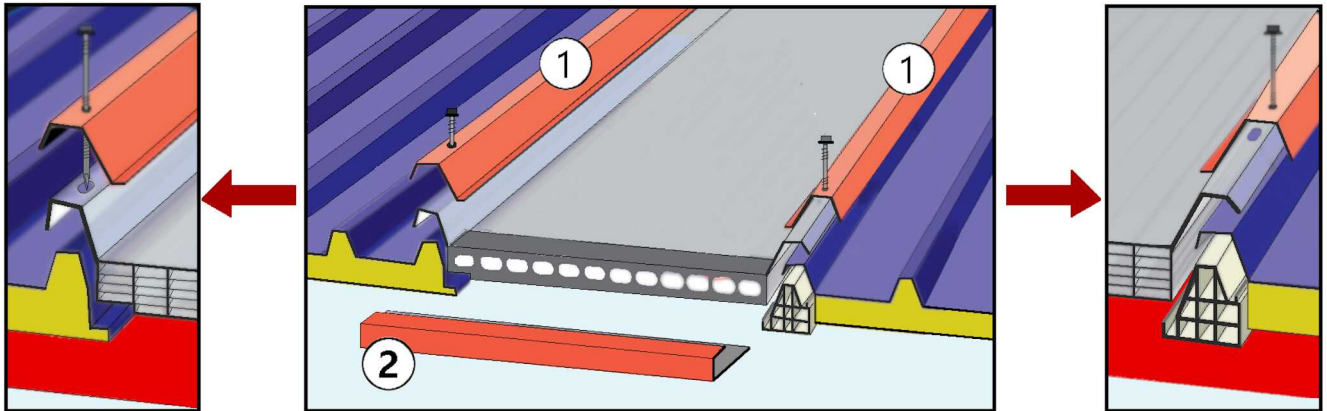
$$\Delta L = \alpha \times L \times \Delta T^{\circ}$$

ΔL - difference of the expected length in mm

α - linear thermal expansion coefficient (0,065 mm/m °C)

L - Length of the sheet is considered in **metre** to the direction the expansion

ΔT° - difference of estimated temperature, between winter and summer climate in degrees Celsius on pc panel surface.

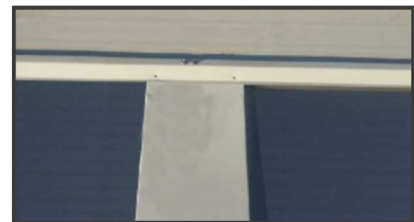


Screw the painted galvanized accessory (2) on the gutter purlin and insert EasyLux pc panel into it.

Place Painted galvanized accessory (1) on the Pc panel wings. Screw them to every purlin by aligning the previously opened screw holes on the pc wings according to the roof purlins distances. During installation, this accessories min 5 cm overlapping must be installed to each others along the length of the roof slope. Lastly, install ridge painted galvanized sheet by screwing. Do not leave the protecting film on pc panel surface. Otherwise they may not be teared out.



OVERLAPPING DETAIL



EasyLux and MasterLux PC panels are installed on long distant roof slopes through a special overlap detail. The upper panel has to be produced 25 cm longer and pressed to 3 mm thickness for PC panels to overlap each other on rafters. Please notify Polinet the press operation during your order for overlapping installation.